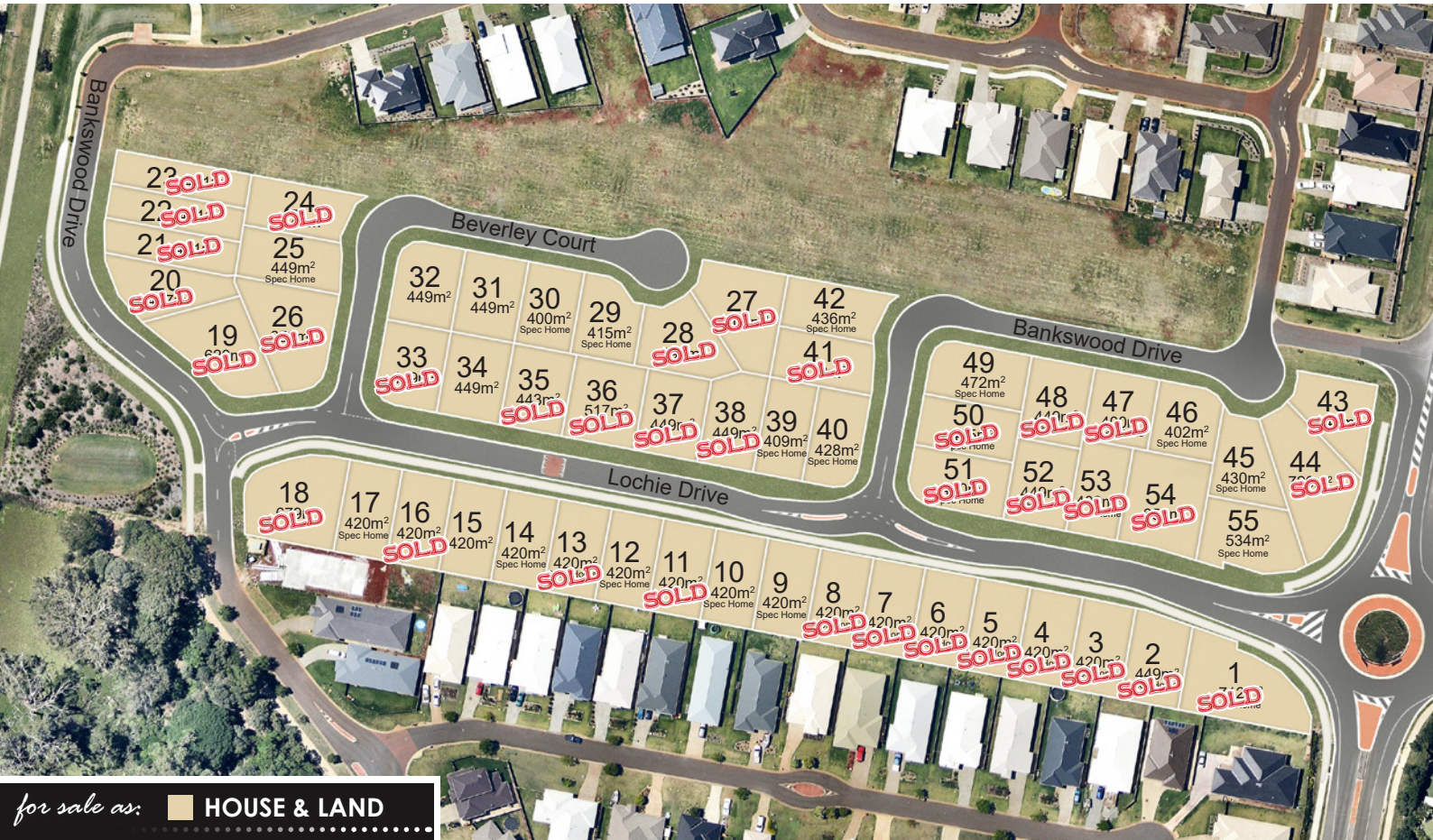




# Parkedge

CONNECTED BAYSIDE LIVING



## 55 lots ranging in size from 400m<sup>2</sup> - 726m<sup>2</sup>

Stage 3, the final stage of the popular Parkedge estate, is now released. Located in a prime position just 500m from waterfront parkland and walking paths, this exciting new release offers custom designed house and land packages.

With the Red edge shopping centre only 1km away and boat ramps, parkland and schools nearby, you will love living at Parkedge, Redland Bay



For more information Ph: Brad on 0400 667 453



Phone: 07 3245 4055  
Fax: 07 3245 1152

Website: [www.fitenihomes.com.au](http://www.fitenihomes.com.au)  
Email: [info@fitenihomes.com.au](mailto:info@fitenihomes.com.au)